

STATE OF ARKANSAS
STATE HIGHWAY COMMISSION

FISCAL YEAR	SHEET NO.	JOB NO.	TOTAL SHEETS	FED. DIST. NO.	STATE	FED. AID PROJ. NO.	FISCAL YEAR	SHEET NO.	TOTAL SHEETS
1930	1	3127	30	6	ARK.	265-D	1930	1	30

INDEX OF SHEETS

Sheet No.	Drwg No.	Title
1	2720	Title Sheet
2	2721	Layout of Bridge 1476
3	2722	Detail of Abutments, Bridge 1476
4	2723	" " Bents, " "
5	2724	Layout of Bridge 1477
6	2725	Details of Abutment No. 1, Bridge 1477
7	2726	Detail of Piers, Bridge 1477
8	2727	Detail of Abutment No. 2, Bridge 1477
9	2728	Layout of Bridge 1478
10	2729	Detail of Abutments, Bridge 1478
11	2730	" " Piers " "
12	2731	Layout of Bridge 1479
13	2732	Detail of Abutments, Bridge 1479
14	2733	Details of Piers, Bridge 1479
15	2447	Std 90' Low Truss Span, 24' Roadway
16	2734	Layout of Bridge 1480
17	2316	Std 40' R.C.D. Girder Span (3 girder type), 24' Roadway
18	2449	Std 100' Low Truss Span, 24' Roadway
19	2735	Layout of Bridge 1481
20	2736	Details of Abutments for Bridge 1481
21	2737	" " Bents, Br. 1481
22	2314	Std 35' R.C.D. Girder Span (3 girder type), 24' Roadway
23	2738	Layout of Bridge 1482
24	2739	Details of Abutments, Bridge 1482
25	2740	" " Bents, " "
26	2313	Std 30' R.C.D. Girder Span (3 girder type), 24' Roadway
27	2741	Layout of Bridge 1485
28	2742	Details of Abutments, Bridge 1485
29	2743	" " Piers, " "
30	2336	Std 35' R.C.D. Girder Span (3 girder type), 24' Roadway
16A	2734A	Details of Pier 1 Bridge 1480
16B	2734B	" " Abutment No. 1 Bridge 1480

PLAN OF PROPOSED BRIDGES
ON
GURDON-ARKADELPHIA ROAD
CLARK COUNTY

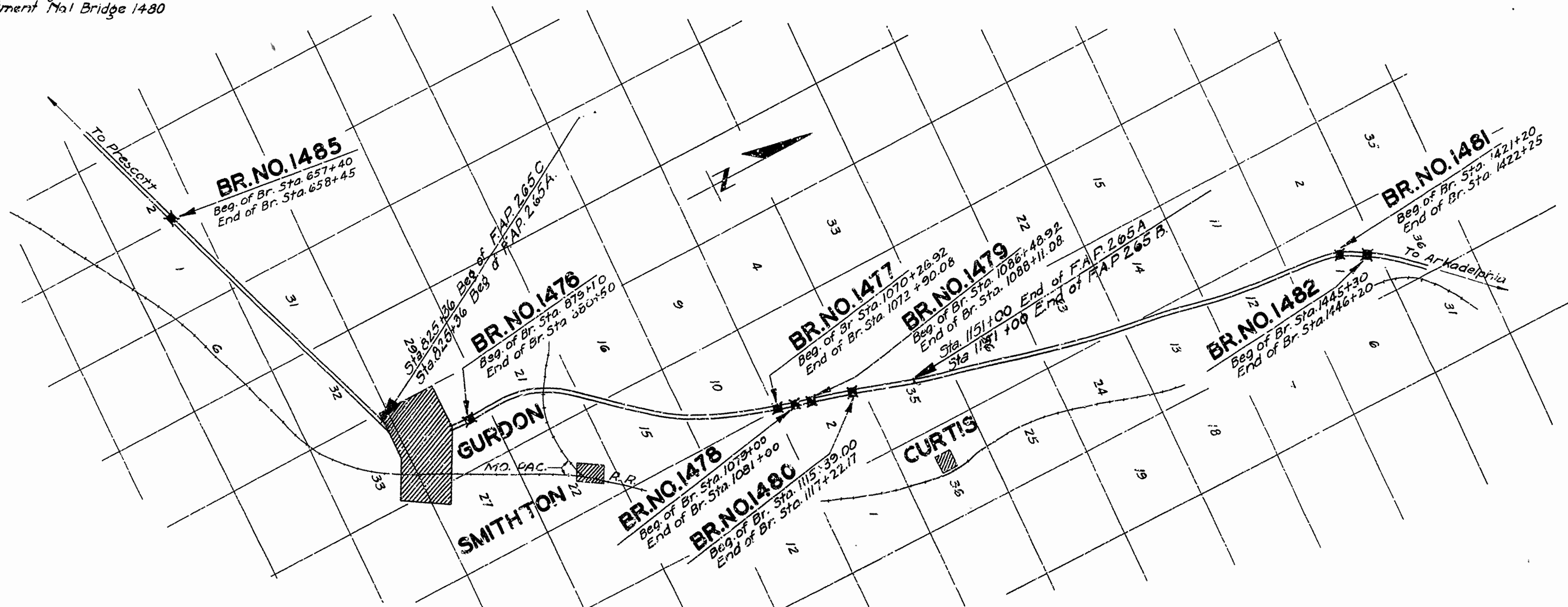
ROUTE 51 SEC. 1
JOB NO 3127
FEDERAL AID PROJECT NO. 265-D

QUANTITIES

* Item No.	Earth Excavation	Qty	Units
13	Dry Excavation for Structures	5,798	Cu Yds.
13	Wet " "	1,276	" "
54	Class "A" Concrete	3,916	" "
54	" " " " " "	2,185.11	" "
55	Reinforcing Steel	1,343.95	" "
56	Structural Steel (Trusses)	580.975	Lbs.
57	Untreated Timber Piling	307.510	" "
74	Concrete Railing for Structures	10,946	Lin. Ft.
74	" " " " " "	1,948	" "

* Non Participating In Federal Aid

Federal Aid Markers of Approved Design Furnished By the State to be placed at each End of the Bridge.



LAYOUT
Scale: 1"=400'

GROSS & NET LENGTH OF PROJECT	=	1248'-6"	=	0.236 Mi.
LENGTH OF BRIDGES	=	1248'-6"		
LENGTH OF EMBANKMENT	=	400'-0"		
LENGTH OF JOB	=	1648'-6"		

Specifications approved by Chief, Bureau of Public Roads, September 26, 1925, and adopted by State Highway Commission May 30, 1925 with revisions and Special Provisions as follows:

REVISIONS	APPROVED
Pamphlet A Revised Sept. 1st, 1928	Approved June 1st, 1929
" B Revised Nov. 1st, 1928	" "
" C	" "
" D Revised July 1st, 1928	Approved Nov. 24th, 1928
" E Revised Jan. 1st, 1930	" "
" F Revised Aug. 1st, 1929	" "
" G Revised June 1st, 1929	" "
" H Revised Jan. 1st, 1930	" "
" I Revised Mch. 1st, 1930	" "
" J Revised Jan. 1st, 1929	Approved June 1st, 1929
" K	" "
" L Revised Jan. 1st, 1929	Approved June 1st, 1929

SPECIAL PROVISIONS	Item	No. of Sheets
Pamphlet I		
Earth Excavation		3
Untr'd Timber Piling		12
Engineer's Office		1

APPROVED
CHIEF ENGINEER - U. S. BUREAU OF PUBLIC ROADS
APPROVED
DISTRICT ENGINEER - U. S. BUREAU OF PUBLIC ROADS
APPROVED
CHIEF - H. S. BOARD OF PUBLIC ROADS
APPROVED
CHAIRMAN - STATE HIGHWAY COMMISSION
APPROVED
STATE HIGHWAY ENGINEER

N. B. Brown
BRIDGE ENGINEER

BRIDGES NO. 1476, 1477, 1478, 1479, 1480, 1481 & 1482 DRAWING NO. 2720

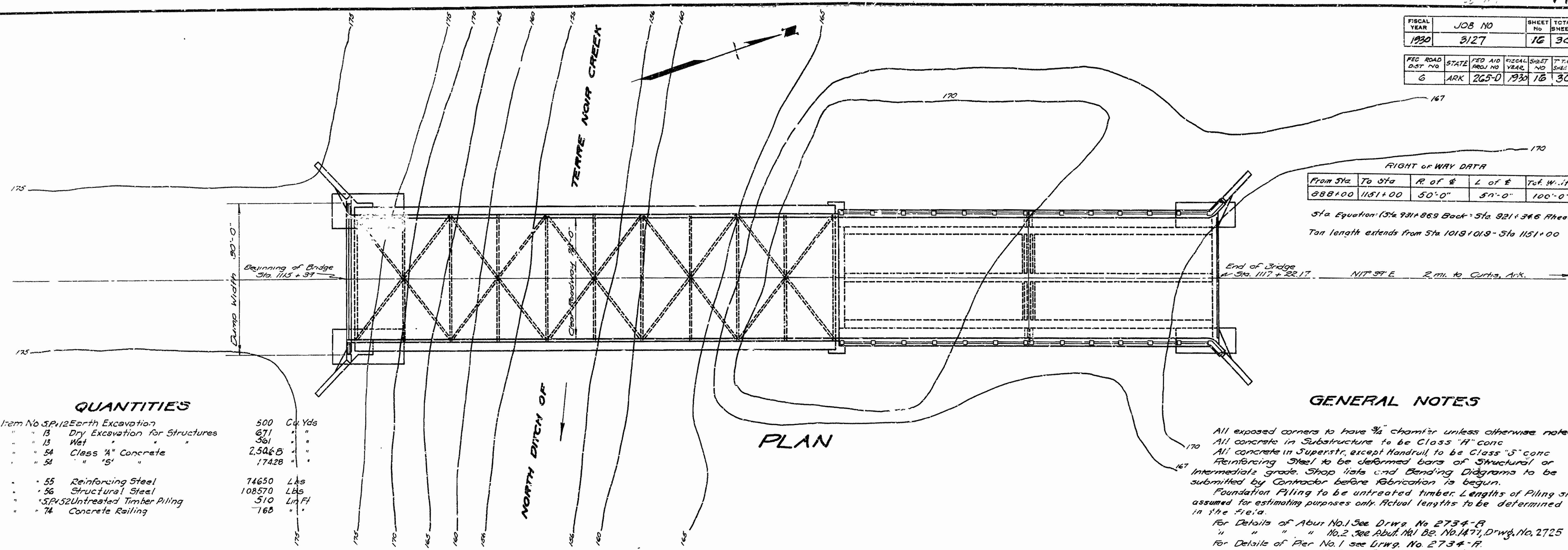
FISCAL YEAR	JOB NO	SHEET NO	TOTAL SHEETS
1930	3127	16	30

FED ROAD DIST NO	STATE	FED AID PROJ NO	FISCAL YEAR	SUBST NO	TOTAL SHEETS
6	ARK	265-0	1930	16	30

RIGHT OF WAY DATA

From Sta	To Sta	R of E	L of E	Tot. W. th
888+00	1151+00	50'-0"	50'-0"	100'-0"

Sta Equation: $(3\% \text{ Rise} + 0.69 \text{ Back} - \text{Sta} \ 921 + 346 \text{ Ahead})$
 Tan length extends from Sta 1018+01.8 - Sta 1151+00

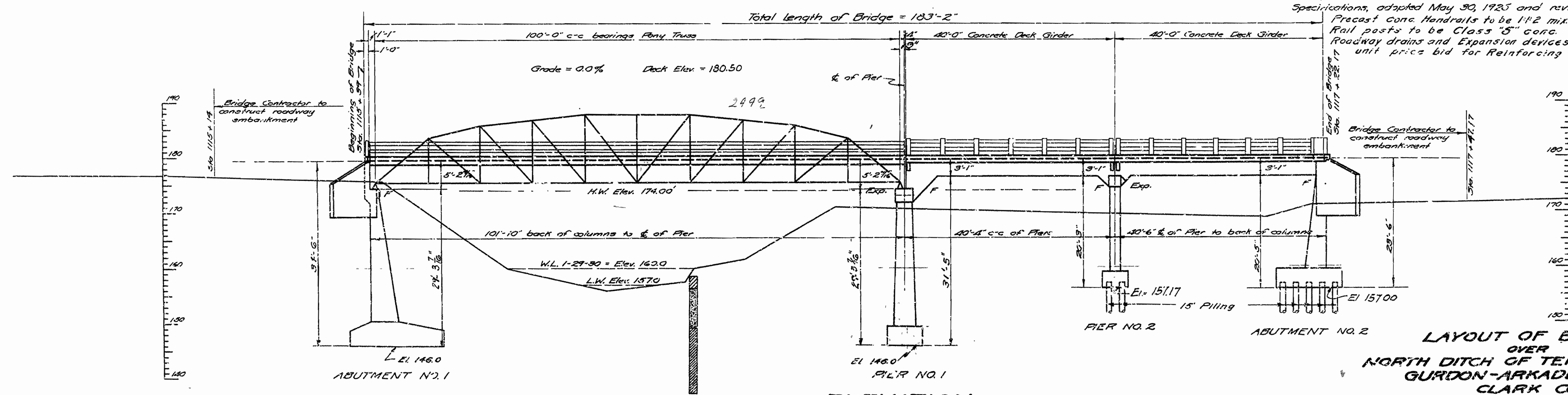


QUANTITIES

Item No 5.PV12 Earth Excavation	500	Cu Yds
" " 13 Dry Excavation for Structures	671	"
" " 13 Wet	361	"
" " 54 Class 3/4" Concrete	2,506.8	"
" " 54 " 1/2"	174.28	"
" " 55 Reinforcing Steel	74650	Lbs
" " 56 Structural Steel	108570	Lbs
" " 57 PV32 Untreated Timber Piling	510	Lin Ft
" " 74 Concrete Railing	760	"

GENERAL NOTES

All exposed corners to have 3/4" chamfer unless otherwise noted.
 All concrete in Substructure to be Class "A" conc.
 All concrete in Superstr. except Handrail to be Class "S" conc.
 Reinforcing Steel to be deformed bars of Structural or Intermediate grade. Shop lists and Bending Diagrams to be submitted by Contractor before fabrication is begun.
 Foundation Piling to be untreated timber. Lengths of Piling shown assumed for estimating purposes only. Actual lengths to be determined in the field.
 For Details of Abut. No. 1 See Drawg. No 2734-B
 " " " " No. 2 See Abut. No. 1 Be. No. 1471, Drawg. No. 2725
 For Details of Pier No. 1 see Drawg. No 2734-F
 " " " " No. 2 " Piers No. 1, 2, and 3, Bridge No 1471, Drawing No. 2726
 For Details of Superstructure see Drawings No. 2449 & 2316.
 Volume occupied by embedded pile heads not included in any quantity of concrete in footing.
 Specifications: Arkansas Standard Road and Bridge Specifications, adopted May 30, 1925 and revised.
 Precast conc Handrails to be 1-1/2 mix. Max agg 3/4".
 Rail posts to be Class "S" conc.
 Roadway drains and Expansion devices to be paid for at the unit price bid for Reinforcing Steel.



TEST HOLE DATA:
 Elev 158.63 - Sur. Elev.
 " 152.63 - 158.63 Clay
 " 156.63 - 149.63 Clay, Sand, Silt + Gravel mix.
 " 147.63 - 137.63 Hard Blue Clay

Bl. H. Elev. 187.19
 Nut in roof of 12"
 Black Oak 40' right
 of Sta 1120 + 30

LAYOUT OF BRIDGE OVER NORTH DITCH OF TERRE NOIR CRK. GURDON-ARKADELPHIA RD. CLARK COUNTY ROUTE 51 SEC. 1

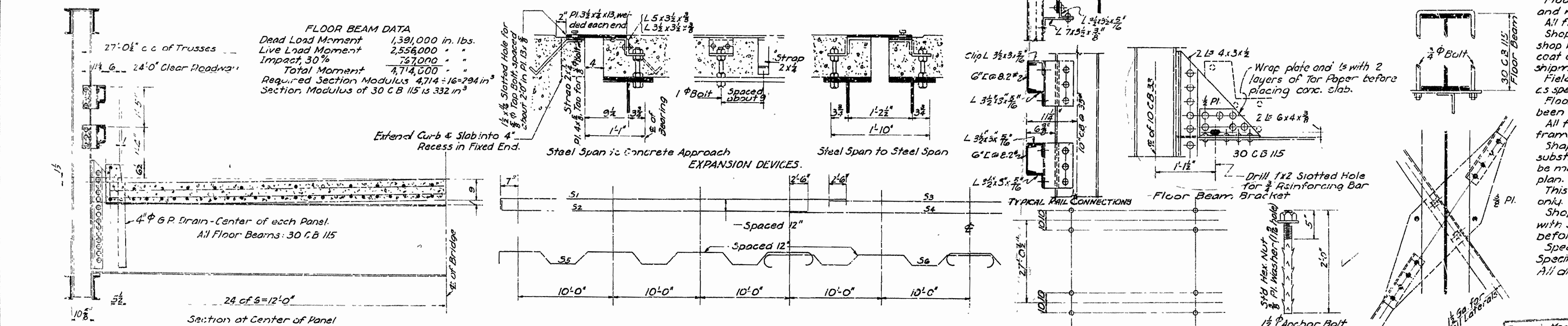
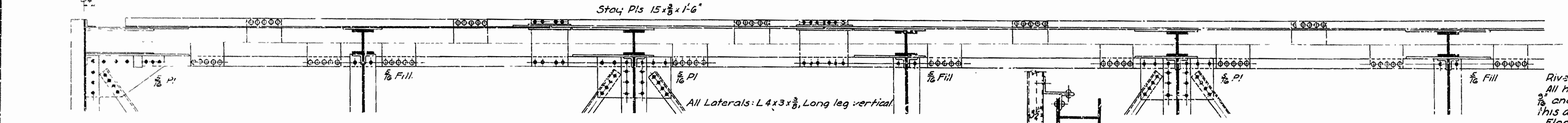
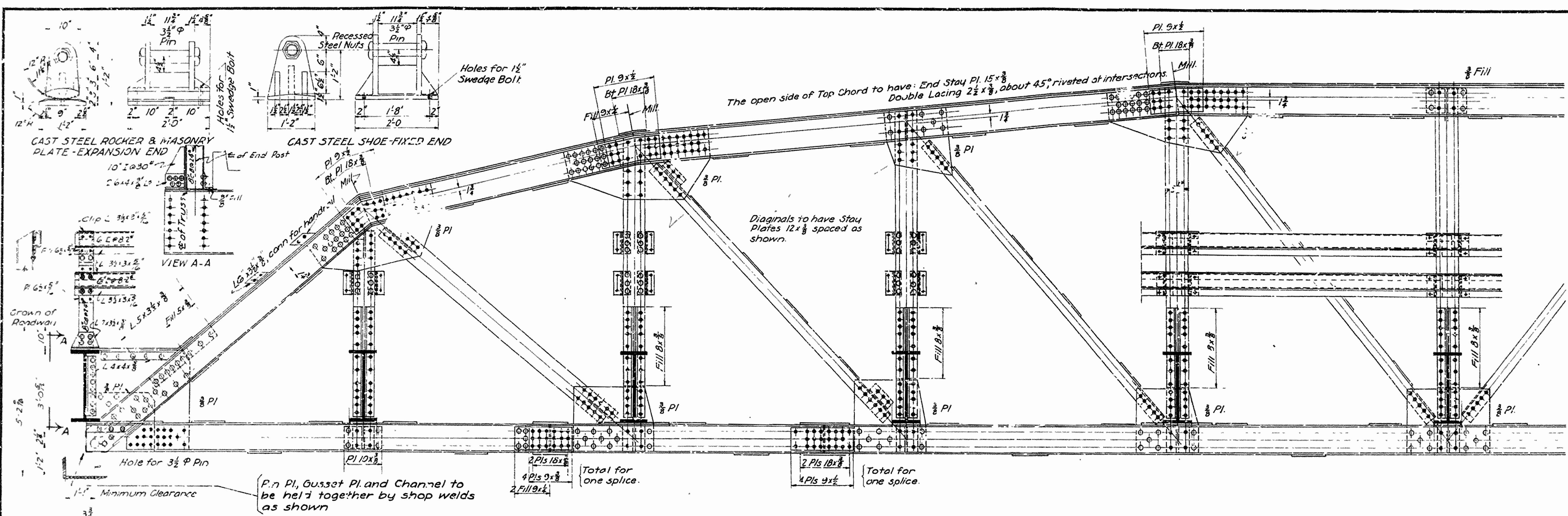
ARKANSAS STATE HIGHWAY COMMISSION
 LITTLE ROCK, ARK.

Drawn By: W.O.E. Date: 5-22-30
 Traced By: G.M. Date: 6-27-30
 Checked By: L.H.H. Date:
 BRIDGE No. 1480 DRAWING No. 2734

W.O.E.
 BRIDGE ENGINEER

Scale: 1 in. = 10 ft.

FISCAL YEAR	Job No.	SHEET NO.	TOTAL SHEETS
4	8173	7	19



Notes
 Rivets 3/4" Open holes 1/2"
 All holes in truss connections to be sub-punched and reamed to size while truss is assembled; this applies to field as well as shop rivets.
 Floor beam connections to be sub-punched 1/2" and reamed to a metal template.
 All field connections shall be riveted.
 Shop paint - After being completely assembled and shop work finished, all pieces shall be given one coat of red lead and raw linseed oil before shipment.
 Field paint - Apply two coats of different colors as specified by the engineer.
 Floor slab - Concrete to be Class "S". One inch has been added for wear.
 All floor beams to be milled to exact length after framing angles have been riveted.
 Shapes of equal or greater strength may be substituted for shapes shown, but payment will be made in accordance with sizes shown on this plan.
 This drawing shows general features of design only.
 Shop drawings shall be made in compliance with specifications, submitted and approved before fabrication is begun.
 Specifications - Ark. Standard Road & Bridge Specifications, adopted May 30, 1925 & Revised.
 All dimensions shown are center to center of bars.

Revised Members, Hangers, Drains, Quantities - 11/28 - 8:30-30
 Sheets R.E.M.S. 25-37

STANDARD PLAN
 100'-0" LOW TRUSS SPAN
 24'-0" CLEAR ROADWAY
 ROUTE 66
 ARKANSAS STATE HIGHWAY DEPARTMENT
 LITTLE ROCK, ARK.
 Drawn By: A Date: 4-10-30
 Traced By: JH Date: 4-16-30
 Checked By: Date:
 BRIDGE NO. [] DRAWING NO. 2449
 Scale: 1/2 in. = 1 ft.